

Air passenger transport in the EU

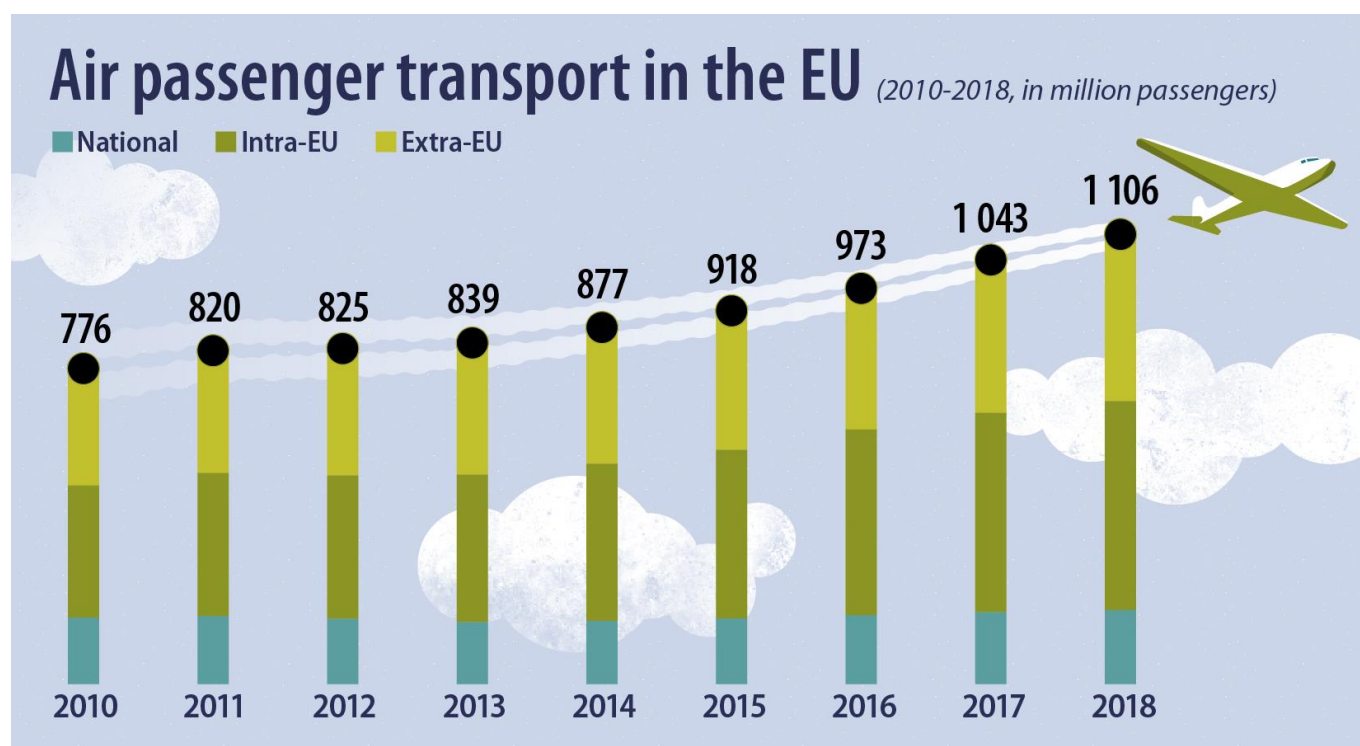
Record number of air passengers carried at more than 1.1 billion in 2018

Almost 63 million more than in 2017

In 2018, 1.1 billion passengers travelled by air in the **European Union (EU)**, up by 6% compared with 2017 and by 43% compared with 2010. Over this period, air passenger transport has steadily risen in the **EU**.

In 2018, intra-EU transport represented almost half (46%) of total air passenger transport in the **EU** and extra-EU transport over a third (37%), while national transport accounted for fewer than 1 in every 5 passengers (16%).

These figures are issued by **Eurostat, the statistical office of the European Union**.



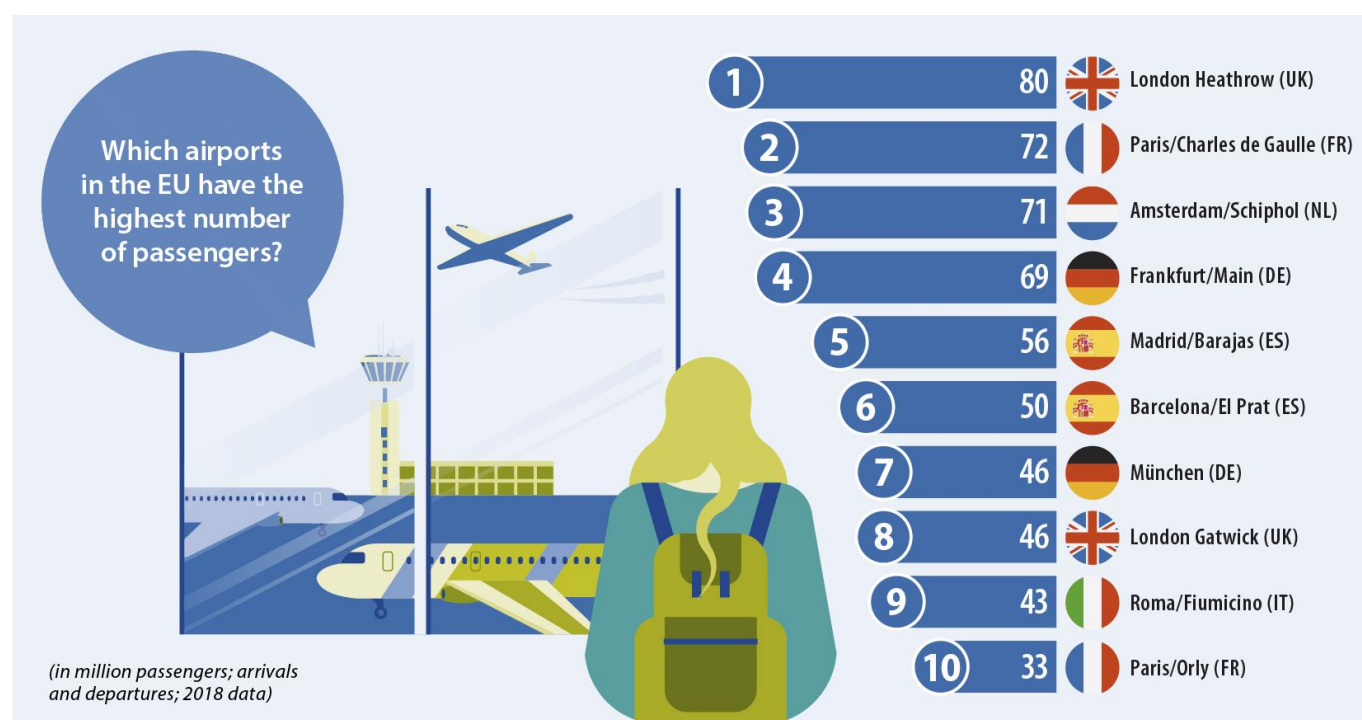
ec.europa.eu/eurostat 

Largest increase in air passenger transport in Lithuania, Latvia, Poland and Slovakia

In 2018, the largest number of air passengers was recorded in the **United Kingdom** (272 million passengers), followed by **Germany** (222 million), **Spain** (221 million), **France** (162 million) and **Italy** (153 million).

The number of air passengers carried in 2018 rose in all EU Member States compared with 2017. The highest increases were registered in **Lithuania** (+19%), **Latvia, Poland and Slovakia** (all +16%), ahead of **Estonia and Hungary** (both +14%), **Malta** (+13%), **Luxembourg** (+12%) and **Finland** (+11%), whilst the lowest increase was registered in **Sweden** (+1%), followed by the **United Kingdom** (+3%), **Belgium, Denmark and the Netherlands** (all +4%). Among the top 5 Member States in terms of air passengers transported in 2018, the highest increase was registered in **Italy** (+6%).

Overall in the **EU**, the number of air passengers rose by 62.8 million (+6%) between 2017 and 2018, driven by the rise in extra-EU (+9%) and intra-EU transport (+5%).



ec.europa.eu/eurostat

London/Heathrow, Paris/Charles de Gaulle and Amsterdam/Schiphol: top 3 passenger airports

London/Heathrow remained the EU's busiest passenger airport in 2018, with 80 million passengers handled, slightly up (+3%) compared with 2017. **Paris/Charles de Gaulle** (72 million, +4%), **Amsterdam/Schiphol** (71 million, +4%), **Frankfurt/Main** (69 million, +8%) and **Madrid/Barajas** (56 million, +9%) completed the top 5 of the busiest airports in the EU. They were followed by **Barcelona/El Prat** (50 million, +6%), **München** (46 million, +4%), **London/Gatwick** (46 million, +1%), **Roma/Fiumicino** (43 million, +5%) and **Paris/Orly** (33 million, +3%).

Each of the top 30 EU airports registered an increase in the number of passengers handled in 2018, except **Hamburg** (-2%) and **Düsseldorf** (-1%). The highest rises among the top 30 EU airports were registered in **Budapest/Liszt Ferenc Int.** (+14%) and **Warszawa/Chopina** (+13%), ahead of **Athinai/Eleftherios Venizelos**, **Wien/Schwechat** and **Helsinki/Vantaa** (all +11%), **Milano/Malpensa** (+10%), **Praha/Ruzyne**, **Lisboa** and **Madrid/Barajas** (all +9%).

In 2018, **London/Heathrow** (48 million) handled the most passengers on extra-EU transport and **Amsterdam/Schiphol** (42 million) the most on intra-EU transport, while **Madrid/Bajas** (16 million) led for national transport.

Geographical information

The **European Union** (EU) includes Belgium, Bulgaria, Czechia, Denmark, Germany, Estonia, Ireland, Greece, Spain, France, Croatia, Italy, Cyprus, Latvia, Lithuania, Luxembourg, Hungary, Malta, the Netherlands, Austria, Poland, Portugal, Romania, Slovenia, Slovakia, Finland, Sweden and the United Kingdom.

Methods and definitions

This release of air passenger transport statistics uses annualised monthly data for 2018 on air 'passengers carried'.

'Passengers carried' refers to all passengers on a particular flight (with one flight number) counted once only and not repeatedly on each individual stage of that flight. It includes all revenue and non-revenue passengers whose journey begins or terminates at the reporting airport and transfer passengers joining or leaving the flight at the reporting airport as well as transfer passengers. Direct transit passengers are excluded.

'Passengers on board' (data for Turkey) refers to all passengers on board of the aircraft upon landing at the reporting airport or at taking off from the reporting airport. It includes all revenue and non-revenue passengers on board an aircraft during a flight stage as well as direct transit passengers (counted at arrivals and departures).

Air passenger figures have been calculated excluding double counting of national and intra-EU passenger transport, i.e. not counting the same passengers twice, once reported by the origin airport as departures and once by the partner airport as arrivals. Since the EU aggregate excludes double counting on intra-EU traffic, Member States' figures do not add up to the EU aggregate. For example, a person flying from Paris to London will be counted in France as a 'departure passenger' and in the United Kingdom as an 'arrival passenger' but only once at EU level.

Air transport at airports in the Member States with a total transport of more than 150 000 passengers carried in 2018 is covered.

More information

Eurostat [website section](#) dedicated to transport statistics

Eurostat [database](#) on transport

Eurostat [metadata](#) on air transport

Eurostat [data visualisation tool](#) on air transport

Eurostat [Statistics Explained](#) article on air transport

This news release marks the International Aviation Day (7 December).

Issued by: **Eurostat Press Office**

Natalia PETROVOVA
Tel: +352-4301-33 444
eurostat-pressoffice@ec.europa.eu


Production of data:

Anna BIALAS-MOTYL
Tel: +352-4301-36 407
anna.bialas-motyl@ec.europa.eu

 [EurostatStatistics](https://www.facebook.com/EurostatStatistics)

 ec.europa.eu/eurostat

 [@EU_Eurostat](https://twitter.com/EU_Eurostat)

 **Media requests:** Eurostat media support / Tel: +352-4301-33 408 / eurostat-mediasupport@ec.europa.eu

Air passenger transport, 2018

	Total air passenger transport		National	International	
	Passengers (in 1 000)	Growth 2018/2017		Intra-EU	Extra-EU
			Passengers (in 1 000)	Passengers (in 1 000)	Passengers (in 1 000)
EU*	1 105 937	+6.0%	181 850	513 531	410 555
Belgium	34 506	+3.7%	9	24 717	9 781
Bulgaria	12 138	+9.4%	315	9 414	2 408
Czechia	17 838	+9.8%	62	12 200	5 577
Denmark	34 701	+4.3%	1 947	23 475	9 279
Germany	222 422	+4.7%	23 626	123 158	75 638
Estonia	2 996	+13.7%	28	2 330	638
Ireland	36 345	+6.0%	99	29 906	6 341
Greece	54 259	+8.1%	8 554	36 699	9 006
Spain	220 611	+5.1%	40 057	148 341	32 213
France	161 991	+5.1%	31 035	72 894	58 062
Croatia	9 731	+10.0%	528	7 498	1 705
Italy	153 352	+6.3%	32 183	90 443	30 727
Cyprus	10 927	+6.7%	(0)	7 424	3 503
Latvia	7 037	+15.8%	11	4 984	2 043
Lithuania	6 254	+19.2%	(0)	4 681	1 573
Luxembourg	3 989	+12.2%	1	3 599	389
Hungary	15 176	+13.7%	(0)	11 530	3 646
Malta	6 806	+13.3%	(0)	6 179	627
Netherlands	79 644	+4.5%	3	50 088	29 553
Austria	31 138	+9.9%	585	21 267	9 286
Poland	43 746	+16.1%	1 905	31 401	10 440
Portugal	51 018	+7.0%	5 170	36 156	9 692
Romania	19 317	+7.7%	1 420	15 191	2 706
Slovenia	1 811	+7.6%	-	1 111	700
Slovakia	2 794	+16.3%	21	2 003	771
Finland	22 174	+10.6%	2 992	13 579	5 603
Sweden	38 945	+1.3%	7 640	23 710	7 595
United Kingdom	272 190	+2.9%	23 661	167 477	81 053
Iceland**	10 166	+22.2%	365	9 802	
Norway	40 030	+3.3%	15 928	24 102	
Switzerland	56 140	+4.8%	720	55 420	
Montenegro	2 440	+12.3%	-	2 440	
North Macedonia	2 153	+15.7%	-	2 153	
Turkey***	154 731	+11.2%	56 675	98 056	

* Double counting is excluded in the intra-EU and total aggregates by taking into consideration only departure declarations

** Break in time series: As of 2018, Iceland data include data on three airports: Akureyri, Keflavik and Reykjavik.

*** Data refer to 'passengers on board'.

(0) less than 500 passengers carried

- real zero (no passengers carried)

The source dataset can be found [here](#).

Top airports* in the EU in terms of total passengers carried, 2018

Rank	Airport		Total air passenger transport		National	Intra-EU	Extra-EU
			in 1000 passengers	Growth 2018/2017	in 1000 passengers	in 1000 passengers	in 1000 passengers
1	UK	London/Heathrow	80 100	+2.7%	4 793	27 730	47 577
2	FR	Paris/Charles de Gaulle	72 196	+4.0%	6 472	28 257	37 468
3	NL	Amsterdam/Schiphol	70 979	+3.7%	1	42 151	28 828
4	DE	Frankfurt/Main	69 386	+7.8%	7 601	30 684	31 102
5	ES	Madrid/Barajas	56 478	+8.6%	15 952	24 769	15 758
6	ES	Barcelona/El Prat	49 594	+6.0%	13 427	27 190	8 978
7	DE	München	46 206	+3.8%	9 662	22 951	13 593
8	UK	London/Gatwick	46 081	+1.2%	3 729	28 633	13 719
9	IT	Roma/Fiumicino	42 894	+5.0%	11 464	18 056	13 374
10	FR	Paris/Orly	33 115	+3.4%	14 125	11 354	7 636
11	IE	Dublin	31 225	+6.4%	98	25 257	5 870
12	DK	København/Kastrup	30 192	+3.7%	1 836	19 746	8 609
13	ES	Palma De Mallorca	29 069	+4.0%	7 012	20 833	1 224
14	PT	Lisboa	29 046	+8.9%	3 633	17 887	7 526
15	UK	Manchester	28 256	+1.7%	2 552	17 778	7 926
16	UK	London/Stansted	27 995	+8.1%	1 945	23 964	2 086
17	AT	Wien/Schwechat	27 025	+11.1%	581	17 546	8 897
18	SE	Stockholm/Arlanda	26 841	+1.0%	5 285	15 221	6 335
19	BE	Brussels/National	25 637	+3.5%	3	17 174	8 461
20	DE	Düsseldorf	24 256	-1.4%	4 184	12 530	7 542
21	IT	Milano/Malpensa	24 148	+9.6%	4 017	12 327	7 804
22	EL	Athinai/Eleftherios Venizelos	24 130	+11.1%	7 736	11 278	5 116
23	DE	Berlin/Tegel	21 991	+7.5%	8 112	9 958	3 921
24	FI	Helsinki/Vantaa	20 990	+10.6%	2 976	12 510	5 505
25	ES	Malaga/Costa Del Sol	18 927	+1.9%	2 738	14 680	1 510
26	PL	Warszawa/Chopina	17 772	+12.8%	1 749	10 213	5 810
27	DE	Hamburg	17 198	-2.2%	5 161	8 551	3 487
28	CZ	Praha/Ruzyne	16 810	+9.4%	29	11 536	5 245
29	UK	London/Luton	16 767	+4.9%	1 197	13 685	1 884
30	HU	Budapest/Liszt Ferenc Int.	14 801	+13.6%	(0)	11 226	3 575

34	RO	Bucuresti/Henri Coanda	13 819	7.9%	1 379	10 145	2 295
55	CY	Larnaka	8 057	4.3%	(0)	4 979	3 078
60	LV	Riga	7 037	15.8%	11	4 984	2 043
61	BG	Sofia	6 932	7.0%	309	5 621	1 002
63	MT	Luqa	6 806	13.3%	(0)	6 179	627
83	LT	Vilnius	4 920	30.9%	(0)	3 538	1 382
91	LU	Luxembourg	3 988	12.2%	(0)	3 599	389
96	HR	Zagreb/Franjo Tudjman	3 322	7.8%	499	1 877	946
106	EE	Lennart Meri Tallinn	2 996	13.7%	28	2 330	638
125	SK	Bratislava/M.R.Stefanik	2 273	17.9%	13	1 606	654
139	SI	Ljubljana/Brnik	1 811	7.6%	-	1 111	700

* The 30 busiest airports in 2018 in terms of total passengers carried and the top airport in each of the 11 Member States which have no airport among the top 30

(0) less than 500 passengers carried

- real zero (no passengers carried)

The source dataset can be found [here](#).